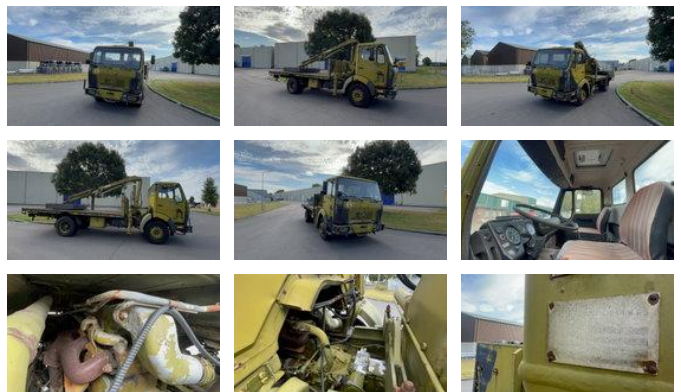




Mercedes-Benz NG NG 1213 Hiab 4x2

General characteristics

Brand	Mercedes-Benz
Model	NG
Subcategory	Crane truck
Meter reading	126.000km
Year of construction	1980
Date of first registration	15-09-1980
Colour	Green
Condition	Used
General state	Good
Fuel	Diesel
Emission class	Euro 0



Properties

Single weight	6.500kg
Load capacity	6.000kg
Max. lifting capacity	6.500kg

Mercedes-Benz NG NG 1213 Hiab 4x2

Technical specifications

Number of axes	2
Axis configuration	4x2
Assets	130hp

Description

FORMER DANISH ARMY MERCEDES BENZ Type: NG 1213 4X2 HIAB CRANE 065 6.5 TON METER DETAILS SEE PHOTOS
Engine brakes and transmission in good condition. Tires in very poor condition.

Accessories