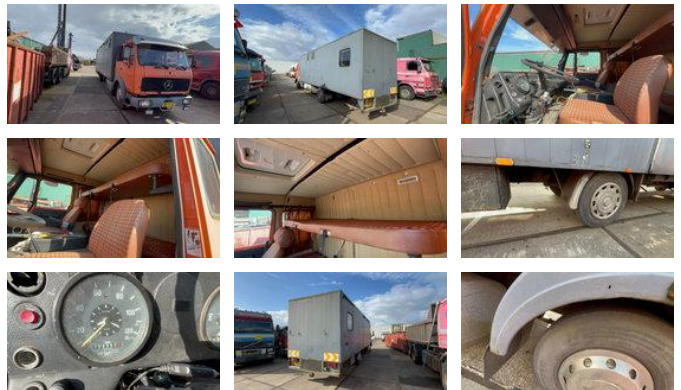




Mercedes-Benz NG Mercedes benz NG 1213 Box truck

General characteristics

Brand	Mercedes-Benz
Model	NG
Subcategory	Box
License plate	BB-89-LV
Meter reading	208.953km
Year of construction	1981
Date of first registration	14-05-1981
Condition	Used
Fuel	Diesel
Emission class	Euro 0



Properties

Single weight	8.100kg
Load capacity	3.700kg
GVW	11.800kg
Width	250cm
Cabin	Sleeping cabin

Mercedes-Benz NG Mercedes benz NG 1213 Box truck

Technical specifications

Number of axes	2
----------------	---

Assets	96kw
--------	------

Description

Mercedes NG 1213 Engine: OM352 Read Km: 208,953 Leaf pinnate manual transmission Tires Good

Accessories